



Installation Instructions



Bosch RSV Governor Shutdown Kit

with 1751 & 1751ES Solenoids

Manual 36706
(Replaces SE-3042 Rev C)

WARNING—DANGER OF DEATH OR PERSONAL INJURY



WARNING—FOLLOW INSTRUCTIONS

Read this entire manual and all other publications pertaining to the work to be performed before installing, operating, or servicing this equipment. Practice all plant and safety instructions and precautions. Failure to follow instructions can cause personal injury and/or property damage.



WARNING—OUT-OF-DATE PUBLICATION

This publication may have been revised or updated since this copy was produced. To verify that you have the latest revision, be sure to check the Woodward website:

www.woodward.com/pubs/current.pdf

The revision level is shown at the bottom of the front cover after the publication number. The latest version of most publications is available at:

www.woodward.com/publications

If your publication is not there, please contact your customer service representative to get the latest copy.



WARNING—OVERSPEED PROTECTION

The engine, turbine, or other type of prime mover should be equipped with an overspeed shutdown device to protect against runaway or damage to the prime mover with possible personal injury, loss of life, or property damage.

The overspeed shutdown device must be totally independent of the prime mover control system. An overtemperature or overpressure shutdown device may also be needed for safety, as appropriate.



WARNING—PROPER USE

Any unauthorized modifications to or use of this equipment outside its specified mechanical, electrical, or other operating limits may cause personal injury and/or property damage, including damage to the equipment. Any such unauthorized modifications: (i) constitute "misuse" and/or "negligence" within the meaning of the product warranty thereby excluding warranty coverage for any resulting damage, and (ii) invalidate product certifications or listings.

CAUTION—POSSIBLE DAMAGE TO EQUIPMENT OR PROPERTY



CAUTION—BATTERY CHARGING

To prevent damage to a control system that uses an alternator or battery-charging device, make sure the charging device is turned off before disconnecting the battery from the system.



CAUTION—ELECTROSTATIC DISCHARGE

Electronic controls contain static-sensitive parts. Observe the following precautions to prevent damage to these parts.

- Discharge body static before handling the control (with power to the control turned off, contact a grounded surface and maintain contact while handling the control).
- Avoid all plastic, vinyl, and Styrofoam (except antistatic versions) around printed circuit boards.
- Do not touch the components or conductors on a printed circuit board with your hands or with conductive devices.

IMPORTANT DEFINITIONS

- A **WARNING** indicates a potentially hazardous situation which, if not avoided, could result in death or serious injury.
- A **CAUTION** indicates a potentially hazardous situation which, if not avoided, could result in damage to equipment or property.
- A **NOTE** provides other helpful information that does not fall under the warning or caution categories.

Revisions—Text changes are indicated by a black line alongside the text.

Woodward Governor Company reserves the right to update any portion of this publication at any time. Information provided by Woodward Governor Company is believed to be correct and reliable. However, no responsibility is assumed by Woodward Governor Company unless otherwise expressly undertaken.

Contents

ELECTROSTATIC DISCHARGE AWARENESS	II
CHAPTER 1. GENERAL INFORMATION.....	1
Description.....	1
Dimensions	1
Parts List.....	2
CHAPTER 2. INSTALLATION.....	3
Parts Removal	3
New Hardware Installation	3
Solenoid Wiring	5
Optional Connectors	5
Checking the Installation	5
CHAPTER 3. SERVICE OPTIONS	6
Product Service Options.....	6
Returning Equipment for Repair.....	7
Replacement Parts	8
How to Contact Woodward.....	8
Engineering Services	9
Technical Assistance.....	10

Electrostatic Discharge Awareness

All electronic equipment is static-sensitive, some components more than others. To protect these components from static damage, you must take special precautions to minimize or eliminate electrostatic discharges.

Follow these precautions when working with or near the control.

1. Before doing maintenance on the electronic control, discharge the static electricity on your body to ground by touching and holding a grounded metal object (pipes, cabinets, equipment, etc.).
2. Avoid the build-up of static electricity on your body by not wearing clothing made of synthetic materials. Wear cotton or cotton-blend materials as much as possible because these do not store static electric charges as much as synthetics.
3. Keep plastic, vinyl, and Styrofoam materials (such as plastic or Styrofoam cups, cup holders, cigarette packages, cellophane wrappers, vinyl books or folders, plastic bottles, and plastic ash trays) away from the control, the modules, and the work area as much as possible.
4. Do not remove the printed circuit board (PCB) from the control cabinet unless absolutely necessary. If you must remove the PCB from the control cabinet, follow these precautions:
 - Do not touch any part of the PCB except the edges.
 - Do not touch the electrical conductors, the connectors, or the components with conductive devices or with your hands.
 - When replacing a PCB, keep the new PCB in the plastic antistatic protective bag it comes in until you are ready to install it. Immediately after removing the old PCB from the control cabinet, place it in the antistatic protective bag.

**CAUTION**

To prevent damage to electronic components caused by improper handling, read and observe the precautions in Woodward manual 82715, *Guide for Handling and Protection of Electronic Controls, Printed Circuit Boards, and Modules*.

Chapter 1.

General Information

Description

The Woodward Bosch RSV Governor Shutdown Kit is designed for engines using Bosch pump models A, MW, and P with an RSV governor. The kit comes in left- and right-hand mounting styles. The solenoid included in the kit is either the 1751 ES externally switched (3 wire) solenoid or the 1751 internally switched solenoid.

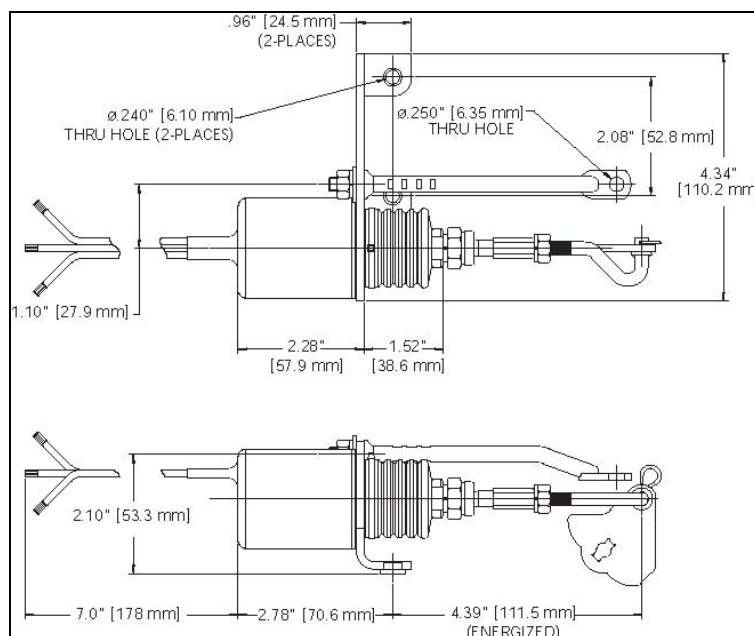
RIGHT-HAND MOUNTED KITS

PART NO.	SOLENOID MODEL	VOLTAGE
SA-3799-12	1751ES	12 Vdc
SA-3799-24	1751ES	24 Vdc
SA-3800-12	1751	12 Vdc
SA-3800-24	1751	24 Vdc

LEFT-HAND MOUNTED KITS

PART NO.	SOLENOID MODEL	VOLTAGE
SA-3742-12	1751ES	12 Vdc
SA-3742-24	1751ES	24 Vdc
SA-3765-12	1751	12 Vdc
SA-3765-24	1751	24 Vdc

Dimensions



Parts List

Refer to **Figure 1** for parts identification.

REF NO.	DESCRIPTION	QTY.
1	M6 Split Lockwasher	5
2	Run/Stop Lever	1
3	Solenoid/Bracket Assembly	1
4	M6 Flatwasher	3
5	M6 x 55mm Mounting Screws	2
6	Support Rod	1
7	M6 x 16mm Hex Screw	1
8	M6 x 1 Hex Nut	1
9	Spring Clip	1

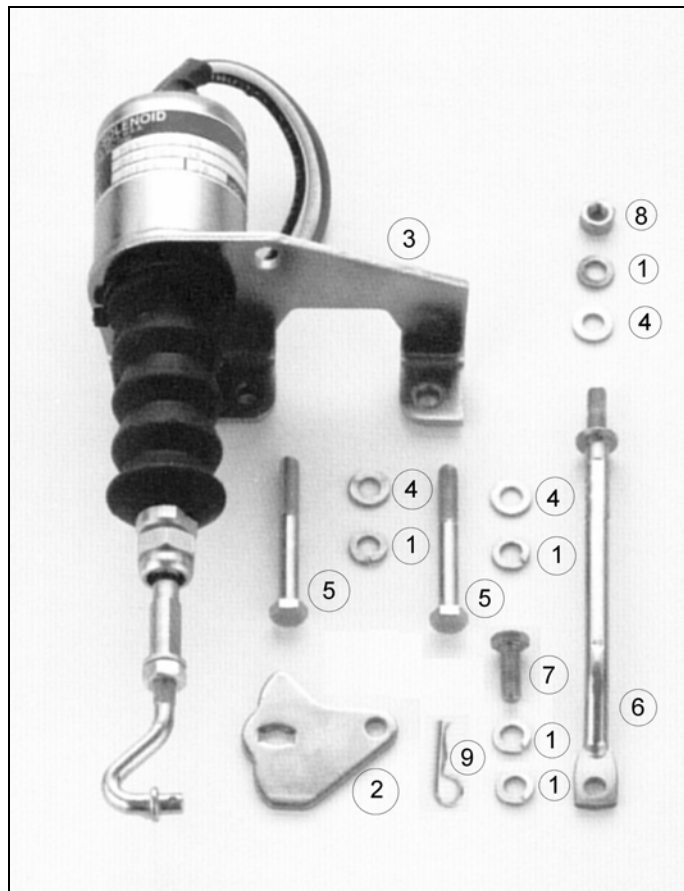


Figure 1. Kit Components

Chapter 2. Installation

**NOTE**

Before removing old parts or installing new ones, ensure that the engine is turned off and the battery is disconnected. Always use proper tools for the installation.

Parts Removal

Figure 2 shows the hardware to be removed before installing the shutdown kit.

1. Remove all parts labeled "A" through "F" in **Figure 2**.
2. Retain Parts A (screw) and C (spring cover) for use when installing the new kit.

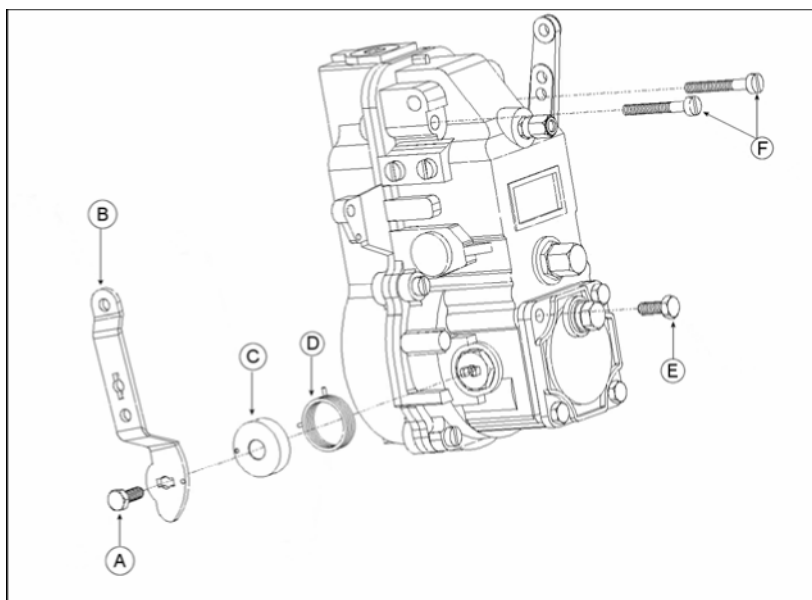


Figure 2. Removal of Old Hardware

New Hardware Installation

Refer to **Figure 3**.

1. Install the spring cover (C) removed previously.
2. Install the new run/stop lever (2). Note the proper orientation of this piece as shown in **Figure 3**.
3. Install the lockwasher (1) and screw (A) that was removed previously. Torque screw to 5-7 Nm (3.5 to 5 ft-lb).
4. Install the solenoid/bracket assembly (3), screws (5), lockwashers (1), and flatwashers (4), to the pump. Torque screws to 5-7 Nm (3.5 to 5 ft-lb).

5. Slip the hook-shaped end of the solenoid linkage (the length setting is factory preset) through the hole in the new run/stop lever. Attach spring clip (9) to lock the solenoid linkage rod to the run/stop lever.
6. Install support rod (6) and insert the threaded end through the hole on the solenoid/bracket assembly.
7. Insert the bolt (7) and lockwasher as shown in **Figure 3** and torque the bolt 5-7 Nm (3.5 to 5 ft-lb).
8. Slip the flatwasher, lockwasher, and hex nut (8) onto the support rod. Note that the support rod fits through a certain mounting hole in the solenoid/bracket assembly. Tighten the hex nut until the solenoid/bracket assembly is flush against the face of the washer on the support rod.

Figure 4 shows the kit completely installed.

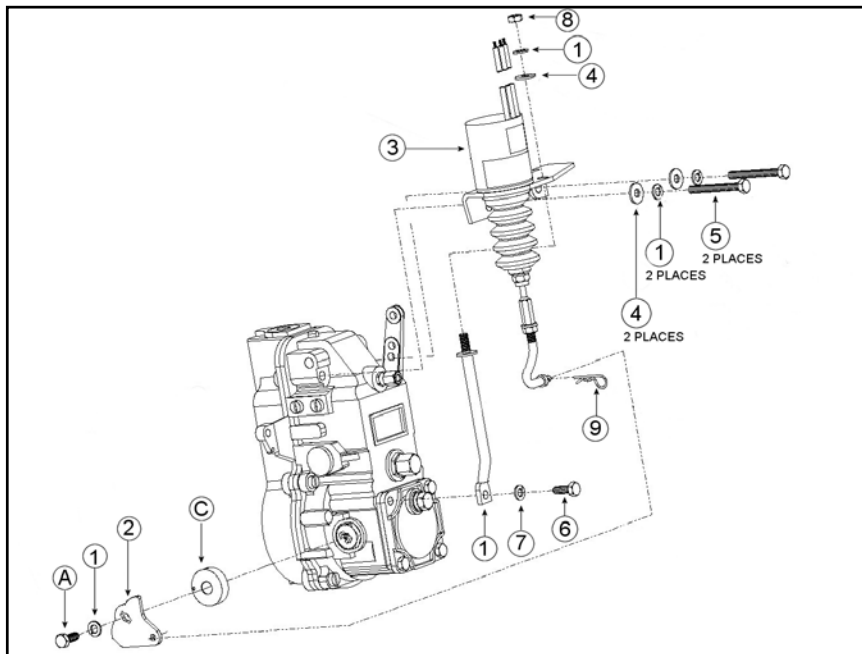


Figure 3. Parts View

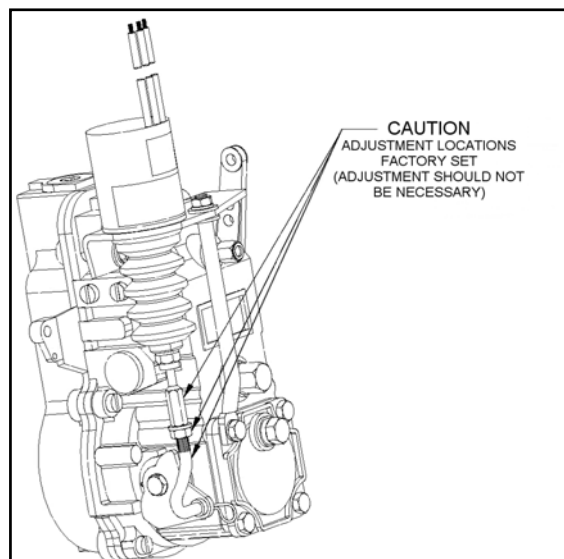


Figure 4. Completely Installed Kit

Solenoid Wiring

1751ES SOLENOID

**NOTE**

For wiring and installation instructions refer to Manual 36542 *Externally Switched Dual Coil Solenoid Wiring Guide* available on www.woodward.com.

- Because this kit is designed only for fuel shutdown applications, refer to the *Electric Shut-Off Applications* chapter in Manual 36542 for installation and wiring instructions.
- The 1751ES model can use all the relay, coil commander, and PCTM wiring methods mentioned in the wiring guide. **Do not use "S" Terminal wiring!**
- For leaded units, wire configurations are pull coil (white), hold coil (red), common (black).

1751 SOLENOID

**NOTE**

For wiring and installation instructions refer to Manual 36575 *Internally Switched Dual Coil Solenoid Wiring Guide* available on www.woodward.com.

Optional Connectors

For varied connection requirements, Woodward has many optional connectors available: ES system connectors, Packard Weather Pack connectors, Metri-Pack sealed connectors, etc.

Checking the Installation

**NOTE**

For detailed troubleshooting information on the solenoid refer to Manual 36541 *Solenoid Troubleshooting Guide* available on www.woodward.com.

To perform a solenoid installation final check:

1. Start and stop the engine to check for proper operation of the shutdown system.
2. For the 1751 internally switched model, make sure that the solenoid fully "bottoms out," since this action prevents solenoid burnout.
3. Follow the suggested wiring sizes and overload protection instructions listed in the wiring guides mentioned above

Chapter 3. Service Options

Product Service Options

The following factory options are available for servicing Woodward equipment, based on the standard Woodward Product and Service Warranty (5-01-1205) that is in effect at the time the product is purchased from Woodward or the service is performed:

- Replacement/Exchange (24-hour service)
- Flat Rate Repair
- Flat Rate Remanufacture

If you are experiencing problems with installation or unsatisfactory performance of an installed system, the following options are available:

- Consult the troubleshooting guide in the manual.
- Contact Woodward technical assistance (see “How to Contact Woodward” later in this chapter) and discuss your problem. In most cases, your problem can be resolved over the phone. If not, you can select which course of action you wish to pursue based on the available services listed in this section.

Replacement/Exchange

Replacement/Exchange is a premium program designed for the user who is in need of immediate service. It allows you to request and receive a like-new replacement unit in minimum time (usually within 24 hours of the request), providing a suitable unit is available at the time of the request, thereby minimizing costly downtime. This is also a flat rate structured program and includes the full standard Woodward product warranty (Woodward Product and Service Warranty 5-01-1205).

This option allows you to call in the event of an unexpected outage, or in advance of a scheduled outage, to request a replacement control unit. If the unit is available at the time of the call, it can usually be shipped out within 24 hours. You replace your field control unit with the like-new replacement and return the field unit to the Woodward facility as explained below (see “Returning Equipment for Repair” later in this chapter).

Charges for the Replacement/Exchange service are based on a flat rate plus shipping expenses. You are invoiced the flat rate replacement/exchange charge plus a core charge at the time the replacement unit is shipped. If the core (field unit) is returned to Woodward within 60 days, Woodward will issue a credit for the core charge. [The core charge is the average difference between the flat rate replacement/exchange charge and the current list price of a new unit.]

Return Shipment Authorization Label. To ensure prompt receipt of the core, and avoid additional charges, the package must be properly marked. A return authorization label is included with every Replacement/Exchange unit that leaves Woodward. The core should be repackaged and the return authorization label affixed to the outside of the package. Without the authorization label, receipt of the returned core could be delayed and cause additional charges to be applied.

Flat Rate Repair

Flat Rate Repair is available for the majority of standard products in the field. This program offers you repair service for your products with the advantage of knowing in advance what the cost will be. All repair work carries the standard Woodward service warranty (Woodward Product and Service Warranty 5-01-1205) on replaced parts and labor.

Flat Rate Remanufacture

Flat Rate Remanufacture is very similar to the Flat Rate Repair option with the exception that the unit will be returned to you in “like-new” condition and carry with it the full standard Woodward product warranty (Woodward Product and Service Warranty 5-01-1205). This option is applicable to mechanical products only.

Returning Equipment for Repair

If a control (or any part of an electronic control) is to be returned to Woodward for repair, please contact Woodward in advance to obtain a Return Authorization Number. When shipping the item(s), attach a tag with the following information:

- name and location where the control is installed;
- name and phone number of contact person;
- complete Woodward part number(s) and serial number(s);
- description of the problem;
- instructions describing the desired type of repair.



CAUTION

To prevent damage to electronic components caused by improper handling, read and observe the precautions in Woodward manual 82715, *Guide for Handling and Protection of Electronic Controls, Printed Circuit Boards, and Modules*.

Packing a Control

Use the following materials when returning a complete control:

- protective caps on any connectors;
- antistatic protective bags on all electronic modules;
- packing materials that will not damage the surface of the unit;
- at least 100 mm (4 inches) of tightly packed, industry-approved packing material;
- a packing carton with double walls;
- a strong tape around the outside of the carton for increased strength.

Return Authorization Number

When returning equipment to Woodward, please telephone and ask for the Customer Service Department [1 (800) 523-2831 in North America or +1 (970) 482-5811]. They will help expedite the processing of your order through our distributors or local service facility. To expedite the repair process, contact Woodward in advance to obtain a Return Authorization Number, and arrange for issue of a purchase order for the item(s) to be repaired. No work can be started until a purchase order is received.

**NOTE**

We highly recommend that you make arrangement in advance for return shipments. Contact a Woodward customer service representative at 1 (800) 523-2831 in North America or +1 (970) 482-5811 for instructions and for a Return Authorization Number.

Replacement Parts

When ordering replacement parts for controls, include the following information:

- the part number(s) (XXXX-XXXX) that is on the enclosure nameplate;
- the unit serial number, which is also on the nameplate.

How to Contact Woodward

In North America use the following address when shipping or corresponding:

Woodward Governor Company
PO Box 1519
1000 East Drake Rd
Fort Collins CO 80522-1519, USA

Telephone—+1 (970) 482-5811 (24 hours a day)
Toll-free Phone (in North America)—1 (800) 523-2831
Fax—+1 (970) 498-3058

For assistance outside North America, call one of the following international Woodward facilities to obtain the address and phone number of the facility nearest your location where you will be able to get information and service.

<u>Facility</u>	<u>Phone Number</u>
Brazil	+55 (19) 3708 4800
India	+91 (129) 4097100
Japan	+81 (476) 93-4661
The Netherlands	+31 (23) 5661111

You can also contact the Woodward Customer Service Department or consult our worldwide directory on Woodward's website (**www.woodward.com**) for the name of your nearest Woodward distributor or service facility.

Engineering Services

Woodward Industrial Controls Engineering Services offers the following after-sales support for Woodward products. For these services, you can contact us by telephone, by email, or through the Woodward website.

- Technical Support
- Product Training
- Field Service

Contact information:

Telephone—+1 (970) 482-5811

Toll-free Phone (in North America)—1 (800) 523-2831

Email—icinfo@woodward.com

Website—www.woodward.com

Technical Support is available through our many worldwide locations or our authorized distributors, depending upon the product. This service can assist you with technical questions or problem solving during normal business hours. Emergency assistance is also available during non-business hours by phoning our toll-free number and stating the urgency of your problem. For technical support, please contact us via telephone, email us, or use our website and reference **Customer Services** and then **Technical Support**.

Product Training is available at many of our worldwide locations (standard classes). We also offer customized classes, which can be tailored to your needs and can be held at one of our locations or at your site. This training, conducted by experienced personnel, will assure that you will be able to maintain system reliability and availability. For information concerning training, please contact us via telephone, email us, or use our website and reference **Customer Services** and then **Product Training**.

Field Service engineering on-site support is available, depending on the product and location, from one of our many worldwide locations or from one of our authorized distributors. The field engineers are experienced both on Woodward products as well as on much of the non-Woodward equipment with which our products interface. For field service engineering assistance, please contact us via telephone, email us, or use our website and reference **Customer Services** and then **Technical Support**.

Technical Assistance

If you need to telephone for technical assistance, you will need to provide the following information. Please write it down here before phoning:

General

Your Name _____
Site Location _____
Phone Number _____
Fax Number _____

Prime Mover Information

Engine/Turbine Model Number _____
Manufacturer _____
Number of Cylinders (if applicable) _____
Type of Fuel (gas, gaseous, steam, etc) _____
Rating _____
Application _____

Control/Governor Information

Please list all Woodward governors, actuators, and electronic controls in your system:

Woodward Part Number and Revision Letter _____

Control Description or Governor Type _____

Serial Number _____

Woodward Part Number and Revision Letter _____

Control Description or Governor Type _____

Serial Number _____

Woodward Part Number and Revision Letter _____

Control Description or Governor Type _____

Serial Number _____

If you have an electronic or programmable control, please have the adjustment setting positions or the menu settings written down and with you at the time of the call.

